

MARTHA HOPKINS STRUEVER

AMERICAN INDIAN ART FOR THE COLLECTOR



**INDIAN MARKET
WEEK SALE**

AUGUST 20-23, 2015
DEVARGAS ROOM
ELDORADO HOTEL
SANTA FE, NEW MEXICO



SEARCHING FOR FINE, HANDMADE Southwest Indian art is an adventure which I especially enjoy each year. I keep on the alert, meeting with many artists, to see their most creative and original objects. Each year, I'm always surprised and rewarded at finding exceptional, fine works to offer.

For the cover of this year's catalogue, I've brought together an assemblage of jewelry, pottery and katsina carvings that I consider especially worthwhile. I've been studying the carving of katsinas at Hopi for the past several years and have decided that I should include a group of these figures in this year's catalogue. There is extraordinary work being done by today's contemporary carvers; several carvers are now doing new versions of traditional images, but I'm especially drawn to the dolls that were made from about the 1920's through the 1950's. There were some outstanding Hopi artists working at that time, who used fairly primitive tools and natural pigments, and all sorts of found materials as added accents. We begin to identify certain exceptional carvers like Wilson Tewaquaptewa, Jimmy Kootswanwytewa, Otto Pentewa, and just a bit later, Jimmie Koots (Kootshongie), who brought both insight and humor into his katsina dolls, while still working in the old manner. While many of these works are unsigned, each of these artists had a distinctive and recognizable style—well worth collecting. Many of the unnamed carvers deserve attention too.

You'll find lots of jewelry on the following pages, all handmade and original by noted makers. We have examples of both contemporary and traditional works, from various southwestern artists, so I hope you find just the right piece to add to your collection. Please join us at the Eldorado hotel in the first floor De Vargas room, on August 20-23, to see this material first hand.

Sincerely,

Marti

cover: Zuni Pin: inlaid butterfly, possibly by Teddy Weahkee. 4¼" wide x 3" high; Zuni Belt: silver with inlaid Knifewings, possibly John Gordon Leak, ca. 1940. 42" long with 2" diameter conchos; Navajo Earrings: large silver hoops with stamping, ca. 1950, 2¼" long, posts; Navajo or Pueblo Bracelet: silver ingot with stamping, ca. 1900. 7/8" wide, 5 5/8" inside, 13/16" opening; Mark Chee Bracelet, Bisbee turquoise, 53/8" inside, ½" wide, 1" opening, signed

Catalog photography: Cheryl Crownover

MARTHA HOPKINS STRUEVER

2015 INDIAN MARKET SHOW

ELDORADO HOTEL | DEVARGAS ROOM | SANTA FE, NM

Premium Objects from Hopi

*Hand-selected American Indian Jewelry from
the early 20th Century to the Present*

Exceptional Pottery from a Private Collection



JOIN MARTI AT THE ELDORADO

THURSDAY, AUGUST 20, 4:00-7:00PM

FRIDAY, SATURDAY, SUNDAY, AUGUST 21-23, 11:00AM-5:00PM

Bracelet left: Austin Wilson, silver & natural turquoise with stampwork, ca. 1930s, 5 7/8" inside, 1 5/8" wide, 1 1/8" opening; Bracelet top: McKee Platero, 1 center turquoise cab, intricate stampwork & repousse, 6" inside, 1 3/4" wide, 1 1/8" opening, signed; Bracelet right: Perry Shorty, 7 gem grade Lone Mountain turquoise cabs, 5 1/2" inside, 1 1/4" wide, 1/4" opening, signed; "Wakas" Katsina, ca. 1935, 14 1/2" high x 6 1/4" wide; Pottery figure with mineral-painted face: Dextra Quotskuyva, 7 3/4" high x 3 1/2" wide



above left: Bracelet, heavy silver set with turquoise stones and coral stones at the terminals, measures 6" inside with 1" opening, 1 1/4" wide, signed



above right: Ring, 2 red spondylus cabs, 1 3/4" high x 1 1/8" wide, size 9, signed



right: Bracelet, 1 center turquoise cab, intricate stampwork and repoussé, 6" inside, 1 3/4" wide, 1 1/8" opening, signed



Bracelet, 1 center turquoise cab and 2 small cabs at terminals, 5 1/2" inside, 1 5/8" wide, 1" opening, signed



Ring (left), Royston turquoise, stone face measures 2 1/8" high x 1 3/8" wide, size 9, signed



Ring (right), spondylus, stone face measures 2 1/4" high x 1 3/8" wide, size 10 1/4, signed

Pin, turquoise and silver,
2 1/4" wide x 1 1/2" high, signed

Bracelet, 7 gem grade Lone
Mountain turquoise cabs,
5 1/2" inside, 1 1/4" wide,
1 1/4" opening, signed

Earrings, ingot silver, hooks,
1 1/4" long, signed



Bracelet, 7 Lander Blue
turquoise cabs with hand
extruded wire, 5 5/8" inside,
3/4" wide, 1" opening, signed



Bracelet, 3 Morenci turquoise cabs, hand extruded wire, 5 1/8" inside, 7/8" wide,
1 1/4" opening, signed

Bracelet, ingot silver bangle, 5 3/8" inside, 3/8" wide, 1" opening, signed

CHARLES LOLOMA

Pendant, cast silver set with Bisbee turquoise, reverse inlay of lapis, coral and gold, 2 1/8" high x 1" wide, signed

Bracelet, 18kt gold, inlay of coral and lapis, ca. 1980, 5 3/4" inside, 3/4" wide, 1" opening, signed

Ring, gold tufa cast with inside inlay of natural turquoise, ca. 1970, size 7, signed



KEVIN POURIER

Bracelet, carved buffalo horn, m.o.p and sandstone, "Tribute to Loloma", Lakota/Sioux, 5 1/4" inside, 2" wide, 1 1/4" opening, signed



Earrings, 14kt gold with inlay of black onyx, coral, sugalite, lapis and turquoise, pierced with omega clips, $1\frac{3}{8}$ " high x $1\frac{3}{8}$ " wide, signed

Bracelet, double layer inlay wood and stone with ivory, coral and lapis with gold accents, $5\frac{1}{4}$ " inside, $\frac{3}{4}$ " wide, 1" opening, signed



Ring, 18kt gold with gem grade Lone Mountain turquoise, size 8, signed

Earrings, 18kt gold with Lander Blue turquoise, pierced, $\frac{5}{8}$ " wide x $\frac{1}{2}$ " high, signed

RAYMOND SEQUAPTEWA



Necklace, silver chain links and turquoise, "Cloud People", pendant measures 2 1/2" high x 5/8" wide, 22 3/4" long, signed



Necklace, silver chain links with abalone, wood, coral and turquoise inlay, sinew and gold accents, pendant measures 2" high x 1 1/4" wide, 22" long, signed



Bolo, oxidized silver, 2 1/2" dia., 3" long tips, 23" long, signed

Buckle, oxidized silver with one turquoise cab, 2" high x 2 7/8" long, fits up to 1 1/4" belt

Ring (above), abalone face with multi-stone inlay on band, face measures 1 3/8" high x 1" wide, size 9, signed

Ring (right), fossilized ivory with turquoise and coral inlay and gold accents, face is 1 1/4" wide x 1 1/4" high, size 10 1/4, signed



EDISON CUMMINGS



Bolo, silver and 14kt gold, ironwood and turquoise, wood tips, keeper measures 2 5/8" high x 1 3/8" wide, signed

Bracelet (top right), tufa cast silver with red coral beads, ebony and Kingman turquoise, 5 1/2" inside, 2" wide, 1" opening, signed

Bracelet (top), silver cuff with fossilized ivory, ebony, coral, turquoise and ironwood, Navajo, 5 1/8" inside, 2" wide, 1" opening, signed

Bracelet, tufa cast silver with gem grade Lone Mountain turquoise, 5 1/2" inside, 1 5/8" wide, 1" opening, signed

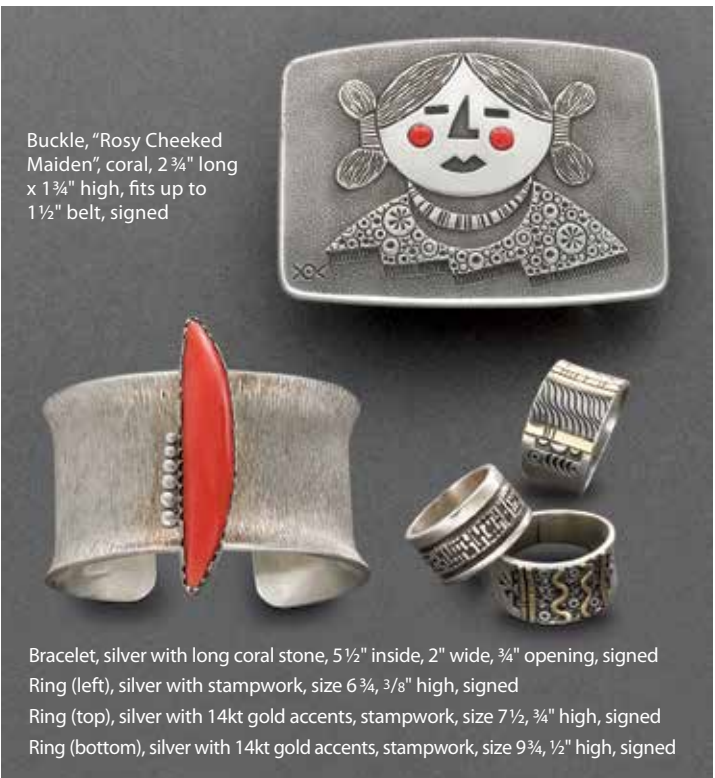
Earrings, gem grade Lone Mountain turquoise, pierced, 1" diameter, signed



Pin, silver, "Sheep on the Hill", 1 3/4" wide x 1 3/4" high, signed

Necklace, handmade wrapped wire chain, tufa cast silver pot with fish, turquoise, pendant is 2 1/2" high x 1 1/2" wide, chain is 29" long, signed

Bracelet, textured silver with red coral cab, 5 3/8" inside, 7/8" wide, 1/8" opening, signed



Buckle, "Rosy Cheeked Maiden", coral, 2 3/4" long x 1 3/4" high, fits up to 1 1/2" belt, signed

Bracelet, silver with long coral stone, 5 1/2" inside, 2" wide, 3/4" opening, signed

Ring (left), silver with stampwork, size 6 3/4, 3/8" high, signed

Ring (top), silver with 14kt gold accents, stampwork, size 7 1/2, 3/4" high, signed

Ring (bottom), silver with 14kt gold accents, stampwork, size 9 3/4, 1/2" high, signed

RICHARD CHAVEZ



Bolo, silver with inlay of lapis, coral and turquoise, black leather cord, signed, 22" long, 2 3/4" high x 1 3/4" wide

Earrings (above), silver and lapis with coral and turquoise accents, posts, 1 1/4" long x 7/8" wide, signed

Earrings (left), 14kt gold with orange chalcedony, posts, 2 1/4" long, signed



from left: Ring, silver, coral and lapis, ca. 1985, size 6 1/2, signed

Ring, silver and lapis with coral and turquoise accents, size 6 3/4, 5/8" high, signed

Ring, coral with lapis and turquoise accents, size 4, signed



Pendant, tufa cast silver dragonfly, Cheyenne Custer, 2 1/8" wide x 1 3/4" wide

Bracelet, tufa cast silver with dragonflies, 5 1/2" inside, 1 3/4" wide, 1 1/2" opening, signed



Choker, tufa cast silver, 6 1/2" long x 5 1/2" wide, signed

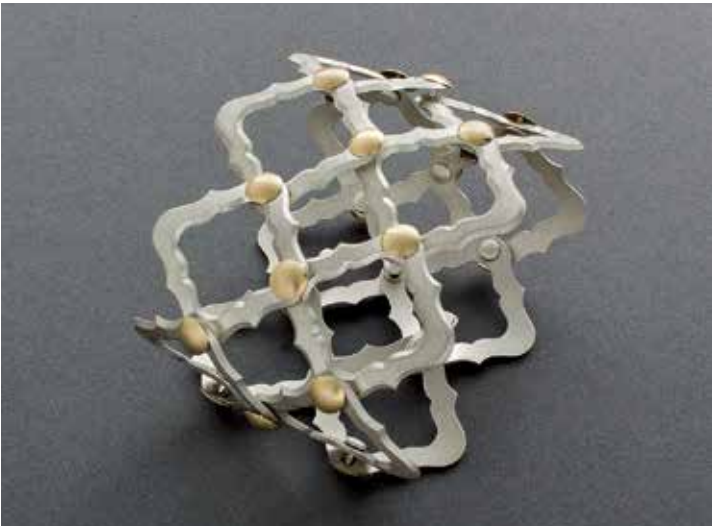
Pendant, tufa cast silver spirit bear, 3" long x 2" wide, signed

Bracelet, 4 strands of tufa cast silver, 5 3/4" inside, 1 1/8" wide, 1" opening, signed

MARIA SAMORA



Bangle (left), silver, "Neve", Taos Pueblo, 2½" diameter, ⅜" wide, signed
Bangle (middle), oxidized silver, "Neve", 2½" diameter, ⅜" wide, signed
Bangle, "Starlight", oxidized silver with 6 diamonds, 2½" diameter, ⅝" wide, signed



Bracelet, quatro foil with square link sterling and gold, 7" inside, 2" high, signed
Ring, 18kt gold, Brazilian agate and druzy quartz, size 6¾, signed



Pendant, 18kt gold, coral and natural carnelian, 2½" long x ½" wide, signed

Earrings, 18kt gold, garnet and poppy jasper, pierced, 1⅝" long x ⅝" wide, signed

Bracelet, silver with gold bezel, ruby, 4 ⅝" inside, ⅛" wide, 1" opening, signed

Pin, palmwood and yowah opal, 2½" high x ¼" wide, signed



from left:

Bracelet, silver with gold bezel, amethyst, 5" inside, ⅛" wide, 1⅛" opening, signed

Bracelet, silver with gold bezel, freshwater pearl, 4 ⅝" inside, ⅛" wide, 1⅛" opening, signed

Bracelet, silver with gold bezel, holly blue agate, 4 ⅝" inside, ⅛" wide, ⅞" opening, signed

MIKE BIRD ROMERO



Bracelet, fossilized ivory with abalone totem motifs, 5½" inside, 1⅞" wide, 1¾" opening, signed

Ring, turquoise and coral, 1¾" long x ⅞" wide, size 7, signed

Pin (top), fossilized ivory bird, 2⅞" long x ¾" high, signed

Pin (bottom), fossilized ivory fish, 2⅞" long x 1" wide, signed

OLIN TSINGINE



Bangles, ingot silver with stamping
(left) 5⅞" inside, ¼" wide, 1¼" opening
(center) 5⅞" inside, ¼" wide, 1¼" opening
(right) 5" inside, ½" wide, 1½" opening

Bracelet (left), large ingot silver cuff with Bisbee cab, repoussé, 5½" inside, 1¾" wide, 1¼" opening, signed

Bracelet (right), ingot silver with stamping, 4¾" inside, 1⅞" wide, 1⅞" opening, signed



Pin (above), silver, elephant on saucer, 1⁵/₈" high x 1¹/₄" wide, signed

Pin (top right), silver, cat and duck, 1³/₄" tall x 1" wide, signed

Pin (right), silver, "Dog on Cat", 2¹/₈" wide x 1³/₄" high

GREG LEWIS



Pendant, stamped silver cross, 3" long x 1¹/₈" wide, signed

Earrings (above), silver and natural turquoise star dangles, hooks, 3¹/₄" long 1¹/₈" wide, signed

Earrings (left), silver and Blue Gem turquoise, 2³/₄" long, signed

Historic Navajo Jewelry



Necklace, natural turquoise, hangs 11" long, tab sizes, 1/2"-1" long



Earrings, hollow domed, White Hogan hallmark, posts, 2" long x 1 1/4" wide

Ring, silver with 3 natural turquoise stones, size 8 1/4

Bracelet, silver and natural turquoise with stampwork, ca. 1930s, Austin Wilson, 5 7/8" inside, 1 5/8" wide, 1 1/8" opening





Buckle, silver with 9 natural turquoise cabs, 3½" wide x 2 5/8" high, fits up to 1½" belt, signed

Bracelet, Bisbee turquoise, 5 3/8" inside, ½" wide, 1" opening, signed

Ranger Buckle Set, natural turquoise, buckle is 2" wide x 2½" long, signed

LAMBERT HOMER, SR.



Set: Necklace and Earrings, natural turquoise, hangs 10½", screwback earrings, 2½" long



Buckle (above), Michael Kabotie, 2 3/4" long x 1 3/4" high, fits up to 1 1/4" belt, signed

Earrings, silver overlay, 2" long x 3/8" wide, posts, signed

Buckle (right), silver overlay, ca. 1930s, Ralph Tewangyaoma, 2 1/2" long x 1 1/2" tall, fits up to 1 1/4" belt, signed



LEWIS LOMAY



Buckle, silver with natural turquoise cab, ca. 1960s, 1 3/4" wide x 2 7/8" long, signed

Bracelet, silver, 5 1/2" inside, 1" opening, 1 1/4" high, signed





Pin (above), Burnham natural turquoise, ca. 1960s, 3 7/8" diameter, signed Evelyn John



Bracelet (left), turquoise cluster, 5 7/8" inside, 1 3/8" high, 1" opening

Bracelet, silver with stampwork, 5 3/8" inside, 1 3/8" opening, 1 3/4" high



Bracelet, 19 Blue Gem cabs, ca. 1945-1955, 5 3/4" inside, 1 1/4" high, 1 1/4" opening

Historic Zuni Jewelry



clockwise from top left:
 Dangle Earrings, natural turquoise nuggets by Alvina Quam, 1⁵/₈" long, pierced, signed
 Dangle Earrings, inlaid knifewing, 1³/₄" long x 7/₈" wide, possibly John Gordon Leak
 Dangle Earrings, pierced, inlaid turquoise, jet, m.o.p. and spondylus shell, 1¹/₂" long
 Round Earrings, inlaid jet and turquoise, pierced, 3/₄" diameter

DISHTA



clockwise from top left: Earrings, channel inlay dangles, 1³/₄" long x 1³/₄" wide, posts
 Earrings, channel inlay, screw-back, 5/₈" diameter
 Cufflinks, channel inlay, 1³/₈" wide x 1³/₄" high
 Earrings, channel inlay snowflakes, 1¹/₂" long x 1¹/₈" wide, posts



Pin (above), butterfly, inlay of jet, m.o.p., turquoise and spondylus, ca. 1940s, 2 3/4" high x 2 3/4" wide



Ring, inlaid jet and turquoise, 1" face, size 8 3/4, John Gordon Leak



Earrings, inlaid jet and turquoise, John Gordon Leak, 1" high x 5/8" wide



Pin (left), Mudhead, inlay of jet, m.o.p., turquoise and spondylus, Ida Vacit, 2" high x 1 1/4" wide

Pin (bottom left), Katinsa, inlay of jet, m.o.p., turquoise and spondylus, Leo Poblano, 3" high x 2" wide

Pin (bottom right), Zuni maiden, inlay of jet, m.o.p., turquoise and spondylus, attributed to Daisy Nampeyo, ca. 1950s, 2 3/4" high x 1 1/4" wide





Kona (Chipmunk), ca. 1950,
8½" high x 2" wide, Hopi Villages tag



Rattle, painted gourd, Wilson
Tewaquaptewa, 11½" high x 6¼" wide



Patung (Squash),
8½" high x 3½" wide



left: Long Hair, ca. 1930, 4" tall
right: Kau-a by Jimmy Kewanwytewa,
ca. 1940, 5½" high, signed



Laguna Gambler, ca. 1940s,
10½" high x 4½" wide



Hilili First, Mesa, ca. 1960s,
5¾" high x 2¾" wide



Kweo (Wolf), ca. 1950s,
13" high x 5⅛" wide



Jar with nine ceremonial figures, Al Quoyawama, Hopi, ca. 1995, 18" high x 17" diameter. Photo: Andrew Neighbour.



Polychrome San Ildefonso jar, attributed to Maria and Maximilliana, ca. 1905, stone polish slip, 8¾" high x 11½" diameter



from top:

Hopi Vessel, ca.1900, depicting a katsina image, 4" high x 4 $\frac{3}{4}$ " across

Polychrome Low Jar by Nampeyo with loop designs, red rim and white slip, 4" high x 6" diameter

Polychrome Jar by Nampeyo with dots, parallel lines and comb motif, 4 $\frac{1}{2}$ " high x 7" diameter



MARTHA HOPKINS STRUEVER
P.O. BOX 2203
SANTA FE, NM 87504
(505) 983-9515

Return Service Requested

Presorted
First Class Mail
US Postage
PAID
CPC Mail
